

Pro-Tournament Scales

Setup Instructions to configure “Windows”
operating system for use with TaySys software
with Pro-Tournament Scales

Introduction

This manual will step you through the procedure of configuring your windows operating system so that Tay-Sys software will communicate with the Scale System and Ticket Printer from Pro-Tournament Scales.

This manual was written using Windows XP professional operating system. Your computer screens may look slightly different than those shown in this manual.

Pro-Tournament Scales guarantees that the scale and printer will function through the USB ports when using the USB to RS-232 convertors purchased from Pro-Tournament Scales. There are adapters on the market that will not function with the scale and printer.

Definitions



USB to RS-232 Adapter

This adapter allows RS-232 equipment to be used with USB serial ports



USB port- rectangle connector with 4 contacts

COM port - RS-232 port with 9 male pins
(Do not confuse with external VGA port that has 15 male pins)

Installing the driver for the USB adapter

NOTE: The installation steps below apply to Windows 98SE, ME, 2000, and XP.

Please complete the driver installation first before you connect the USB adapter.

Step 1. Insert the CD that was included with your USB adapter into you CD-ROM drive. Run the **SETUP** file under x:\(driver where X is the CD-ROM drive letter). When the welcome screen appears, click **Next**. Click the **Finish** button to complete installation.

Step 2: Connect the USB adapter to a USB port on your computer

NOTE: Document the USB port that you plug into. It is important that the same physical port be used each time, or the software will not be able to locate your driver if using a different usb port.

Step 3: A screen will appear that informs you that the driver was successfully installed.

Overview

When connecting devices to your computer it is necessary to setup the windows operating system and the Tournament Keeper software so that the device locations and the communication protocol are known.

The following steps will guide you through on how to configure your system. The screen captures shown in this manual were done on a computer running Windows XP Professional. Different Windows operating systems may look slightly different but will be close enough in appearance for you to perform the setup routine.

Once this setup routine has been performed it will not be necessary to perform this procedure again **unless you change physical usb ports or hardware.**

Preliminary Steps before configuring system.

1. If using the USB to RS-232 adapters, install the drivers as described on page 2 of this manual.
2. If connected, disconnect the USB adapter that goes to the printer and the USB adapter that goes to the scale indicator. (Disregard this step if using 9-pin connectors built into computer)
3. Load the Tay-Sys Tournament Keeper software on your computer.
4. Connect power supply to Printer, have blank paper available to test the printer. Connect the USB adapters to the printer cable and scale lead. (At this time leave the USB connector unattached to the computer)

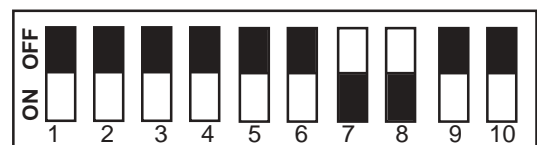
Note regarding the printer connector

Although the connector on the ticket printer looks like the parallel printer port on your computer, it is not a parallel port, it is a serial port and must be connected to a serial port on your computer. If your computer is not equipped with a serial port (most computers sold in the last 3 years do not have serial ports), then a serial to USB adapter must be used.

Note regarding switch located on bottom of ticket printer

The “Dip” switch located on the bottom of the printer is used to set the communication protocol to match the computer. The setting of the switch should be 7&8 ON all other switches OFF:

Warning !! Do not change switch setting with power cord attached. Damage to printer could occur.



Step 1

Identify the Com Port that USB is connected to.

1. Click on the Start Icon located in the lower left corner of the computer screen.



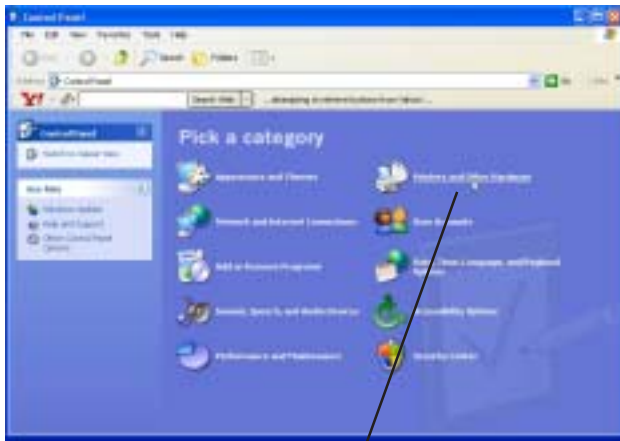
2. Click on "Control Panel" icon



Power User Shortcut:
If your keyboard has the window logo button, you can jump to Step 4 by pressing the "Windows" key along with the "Pause/Break" key."

Step 2

3. In Classic View



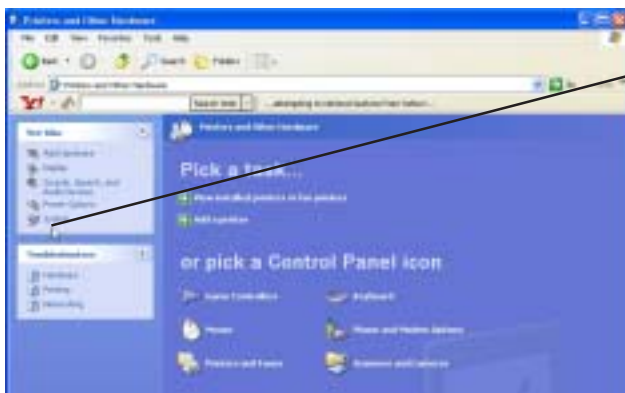
Click on "Printers and other Hardware" icon

Category View



Click on "System" icon

4. In Classic View

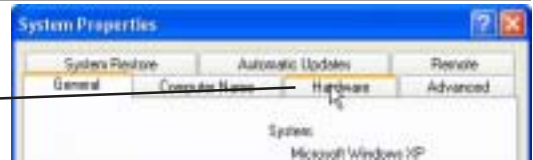


Click on the "System" icon



Step 3

When the System Properties window appears, click on the “**Hardware**” tab



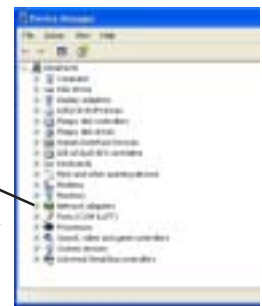
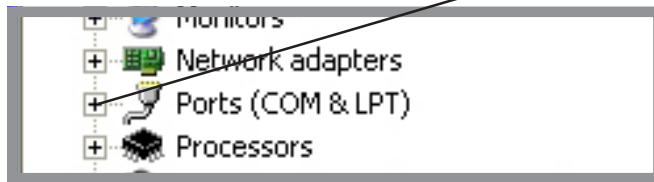
Step 4

In the System Properties window, click on “**Device Manager**”. (location on this screen will vary depending on operating system)



Step 5

Click on the “+” symbol in front of the item in the list labeled “Ports (Com & LPT)”

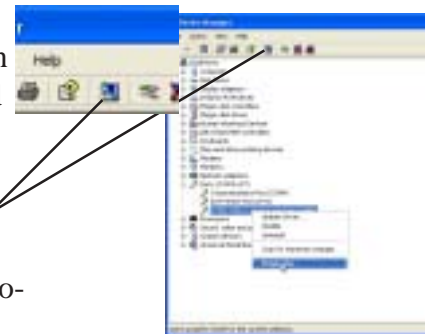


Step 6

At this time connect the **Scale** USB-RS232 adapter to a USB port on your computer. Document exactly which USB-port that you plugged the cable into.

Wait approximately 10 seconds and then click on the “refresh icon”

After the screen refreshes there will be a new com port that says “Prolific USB-to-Serial Com Port (Com X). X will be the number your computer assigned to the com port. Record this value for use later in the setup on page 6 of this manual..



Connect the **Printer** USB -RS232 adapter and repeat the **Step 6** process.(Be sure and record the com # to page 6)

Next right click (*click the right mouse button not the left one*) on the line with the new com port and a window will appear with the word “Properties” at the bottom.



Click on the line labeled “Properties”

Step 7

With the properties window shown, click on the tab labeled “Port Settings”. Set the values to:

Bits per second	<input type="text" value="1200"/>
Data Bits	<input type="text" value="8"/>
Parity	<input type="text" value="None"/>
Stop Bits	<input type="text" value="1"/>
Flow Control	<input type="text" value="None"/>



Click on “OK and then right click on the second USB-com port in the device manager window. Set the Port Settings the same as above

Step 8

In this step, record the setup information.

My **Scale** is connected to Com port number:

My USB cable is plugged into the usb connector located: *(describe which connector is being used)*

My **Printer** is connected to Com port number:

My USB cable is plugged into the usb connector located: *(describe which connector is being used)*

Important!!! *You must plug the USB cables into the same locations on the computer each time otherwise windows will assign a different com port number and the hardware will not function.*

Info

The Windows Com ports are now configured to work with your Pro-Tournament Scale and Pro-Tournament Ticket Printer.

It will still be necessary to **set the hardware parameters in Tay-Sys software** and perform “**Add a new printer**” in the windows operating system before using your equipment. See the next page to complete your hardware setup.

Step9 Tay-sys Software setup

There are two main software versions from Tay-Sys Software. Both styles will be shown for clarity in setting up your system

Click on “File” in the upper left corner of the display and then click on “ Preferences”



If the screen below appears click on “Change”



If your screen appears as below, click on “Scale Setup”



Select “Pro-Tournament Scale Setup”



Set the com port to the number recorded in **Step 8** on page 6. Set for 1200 baud, 8bit, no parity, 1 stop bit.



Set the com port to the number recorded in **Step 8** on page 6. Set for 1200 baud, 8bit, no parity, 1 stop bit. Check the check box “Use Pro-Tournament Scale” and if being used, check the box labeled “Use Pro-Tournament Ticket Printer”



Click on “Ok” to save changes. Your Scale is now ready to use with the Tay-Sys software. Proceed to the weigh-in screen to test the scale hardware and software setup.

(See the next page to setup the ticket printer.)

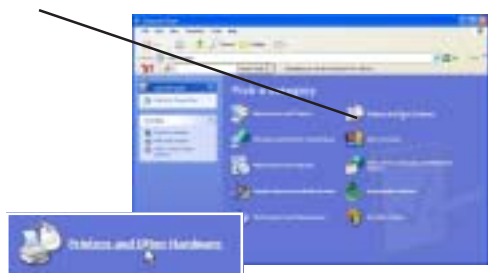
Step 10

Printer Setup

To use the ticket printer the "Generic\ Text" print driver included with the Windows operating system must be installed and configured.

A. Click on the "Start" button and then click on the "Control Panel" selection

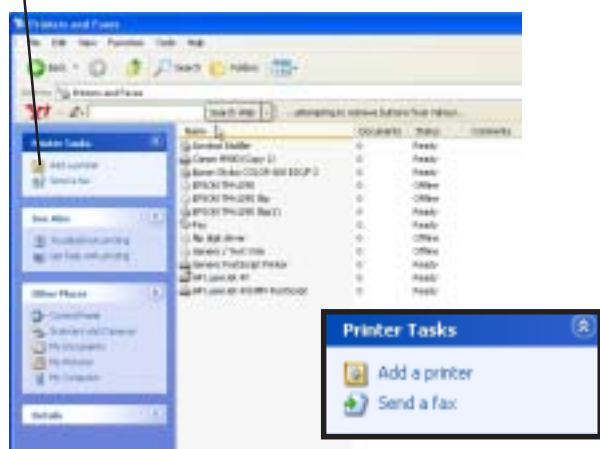
B. If in **Classic view** click on "Printers and other Hardware"



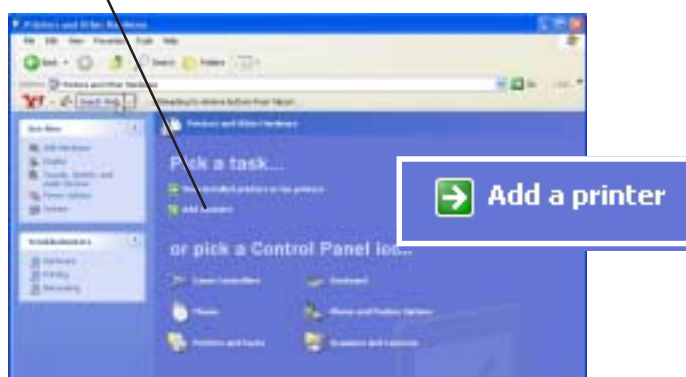
If in "Category" view click on "Add a printer" under "Pick a task...."



C. If in "Classic" view click on "Add a printer" in the left column of the screen



If in **Category view** click on the "Printers and Faxes" icon



D. Print Wizard will now run and step you through setting up your printer. (The ticket printer is not a "plug and play" printer so disregard the notice, and click on "Next >")



The Print Wizard will lead you through 8 steps to configure your ticket printer for use with Windows operating system:

- Step 1. Local or Network Printer?
- Step 2. Select a Printer Port
- Step 3. Install Printer Software
- Step 4. Use Existing Driver
- Step 5. Name your Printer
- Step 6. Printer Sharing
- Step 7. Print Test Page
- Step 8. Completing the "Add Printer Wizard"

See the next page for detailed instructions.....



● Select “Local Printer”
Uncheck “Automatically detect...”
Click on “Next >”



● Select the Com port number that was recorded for the printer in Step 6.
Click on “Next >”



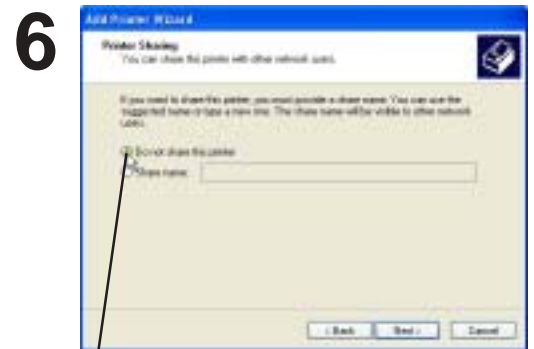
● Select **Generic** under **Manufacturer** and
“Generic/ Text Only” under **Printers**
Click on “Next >”



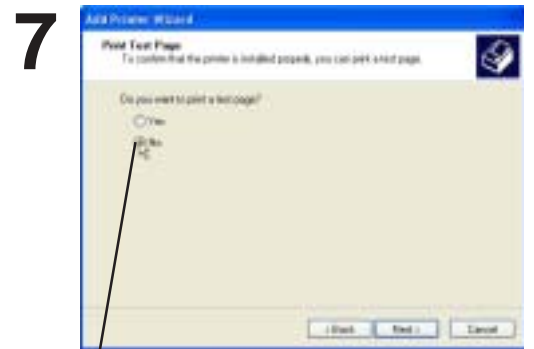
● Select “Replace existing driver”
Click on “Next >”



● Enter a name for this printer. This name will show up on your printer selection screens Click on “Yes” for default printer.



● Click on “Do not share this printer”
Click on “Next >”

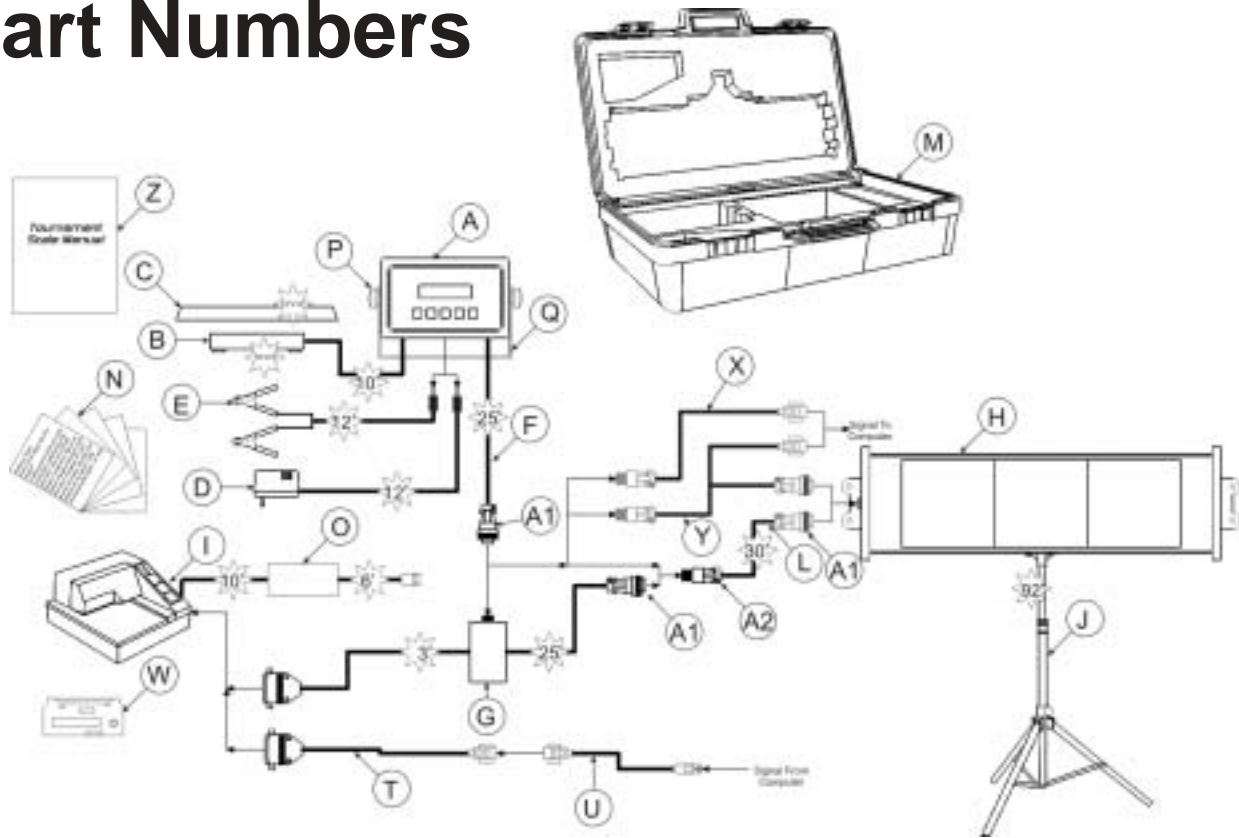


● Click on “NO” for test print page
Click on “Next >” to proceed



● Click on “Finish“ if all the information on the screen is correct.

Part Numbers



Tournament Scale Component Breakdown

<u>Fig.</u>	<u>Part #</u>	<u>Description</u>
A	1000-6820	Tournament Scale Console
B	1000-6951	50lb Weigh Table w/10ft cord
C	1000-6952	12x14 Table Option (w/ 1000-6951)
D	1000-6732	AC Adapter
E	1000-6953	Battery Cable w/ Alligator Clips
F	1000-6986	25' Signal Cable
G	1000-7161	Printer Interface with readout
H	1000-7026	SB-45C Remote Display
I	1000-4367	Epson TMU-295 Ticket Printer
J	1000-6883	Tripod
L	1600-9394-30	Extension Cable for Remote
M	1000-6954	Carrying Case with Foam Inserts
N	1000-6928	Tickets for Ticket Printer
O	1000-7244	AC Adapter for Ticket Printer
P	1000-7243	Knobs (each)
Q	1000-7242	Mounting Bracket
U	1000-7270	USB to RS-232 adapter
W	1000-7915	Ribbon refill for printer
X	1000-7911	7-pin military to 9-pin RS-232
Y	1000-7273	Y-cable 7pin male to 7-pin female to 9-pin RS-232
Z	1000-6968	Manual
A1	1000-5189	7-pin military connector male pins
A2	1000-7124	7-pin military connector female pins